

# RADIANT

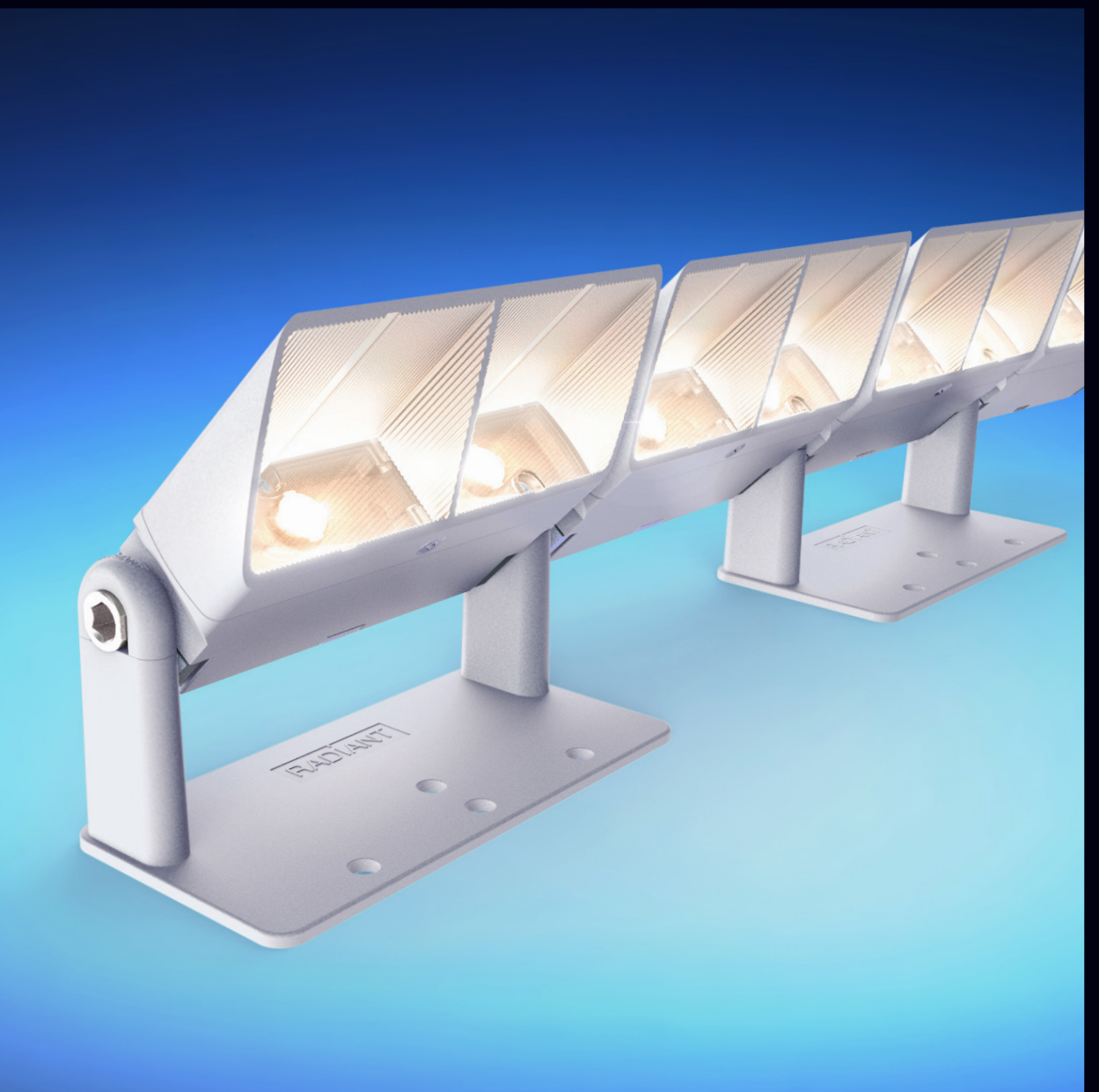
ARCHITECTURAL LIGHTING

Radiant Architectural Lighting provides innovative lighting for projects around the world.

For more information about any of the products below, or any other solutions from our extensive range, please contact our team who will be happy to help, or arrange a virtual meeting to discuss your project.

## One Moorgate Place, London Lighting design by Nulty

Radiant's 3D LED Flex 25 IP20 System has been used to illuminate the dome of the Main Reception Room at One Moorgate Place. The 3D LED Flex 25 System is flexible in 3 dimensions, allowing it to follow the curved profile of the dome perfectly. Thanks to Radiant's patented ball-joint system, each module can be rotated once the luminaires have been fixed to the mounting surface, allowing the lit effect to be aimed with precision. The fixtures are mounted to the balcony below the dome. Each 100mm module comprises of 2 x high-power LEDs with narrow beam lenses. Custom cut-angle snoots ensure visual comfort, without compromising the lit effect. 27 K. 90 CRI LEDs provide a warm output, enhancing the golden frieze and mural running around the inside of the dome. The building was designed in the 1880s by architect John Belcher, and the mural running around the inside of the dome was created by George Murray between 1913-14.



One Moorgate Place, London.  
Lighting design by Nulty.  
Project image © provided by One Moorgate Place.

3D LED Flex 25 IP20 System. Interior, 3D flexible, modular LED lighting system. Up to 3,500 Lumens per mtr with 2 x high Power LEDs per 100 mm module.

