

RADIANT

ARCHITECTURAL LIGHTING

Radiant Architectural Lighting provides innovative lighting for projects around the world.

For more information about any of the products below, or any other solutions from our extensive range, please contact our team who will be happy to help, or arrange a virtual meeting to discuss your project.

Battersea Roof Gardens, London. Lighting design by Speirs Major.

Radiant's 3D LED Flex 25 IP66 System was specified by Speirs Major to provide wall-grazing illumination on the curved exterior facade of the rooftop bar of the Art'otel, located within the new Battersea Power Station redevelopment project in London.

The 3D LED Flex 25 IP66 System was specified with 4 x high-power LEDs with elliptical-beam lenses per module. The patented articulated joint system joining the heat sink modules allows the system to bend and twist on-site. It is therefore ideal for providing linear illumination along curved building surfaces.

The warm 2700 K, 90 CRI light output complements the wooden panelling of the building facade.

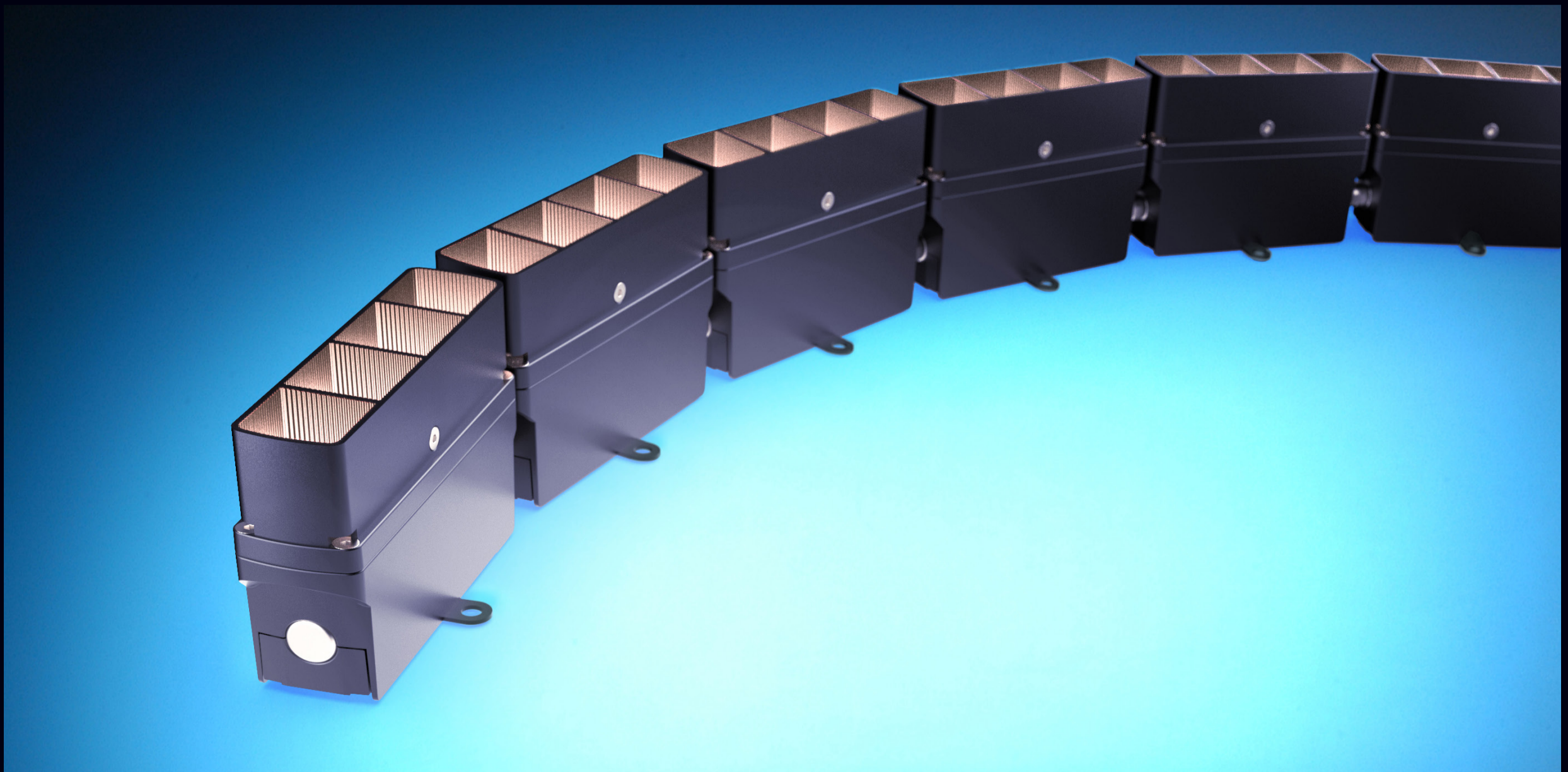
Anti-glare snoots with louvre blades ensure visual comfort.



Battersea Roof Gardens, London.
Lighting design by Speirs Major.
Project photography by Annabel Moeller.



Battersea Roof Gardens, London.
Lighting design by Speirs Major.



3D LED Flex 25 IP 66 System. 4x high-power LEDs with elliptical beam lenses per module. Exterior, 3D flexible, modular LED lighting system. Up to 3,500 Lumens per mtr.